

Prepare Inventory Buddy system for interaction with RAS Core Pro

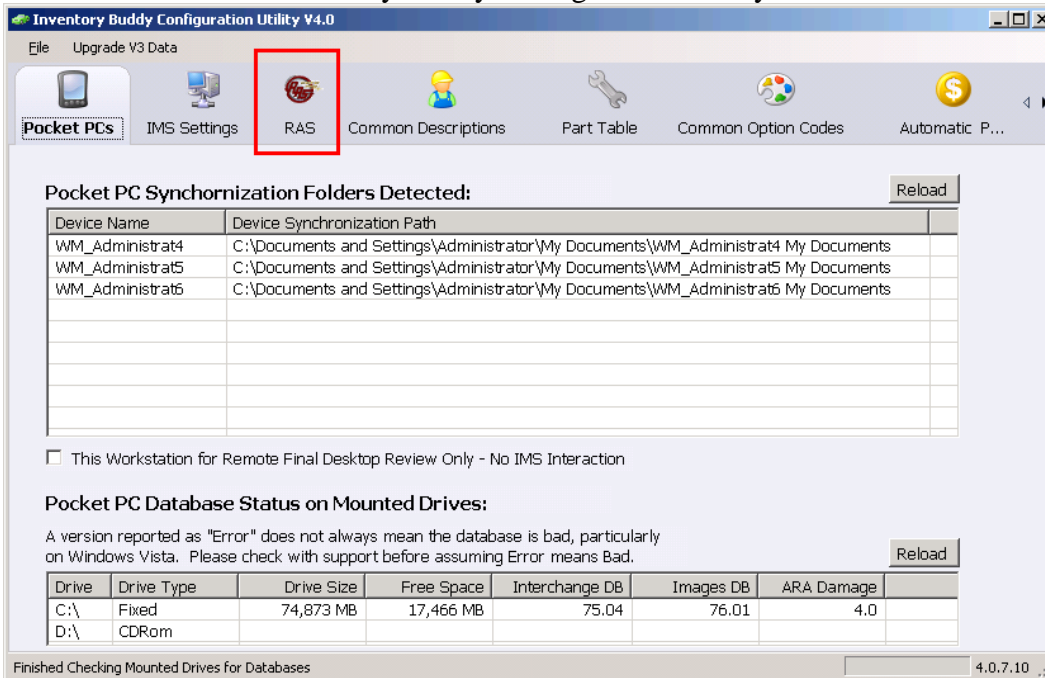
1. Double click **Inventory Buddy** icon on desktop



2. Click **Settings/Preferences** button on Buddy Button Panel



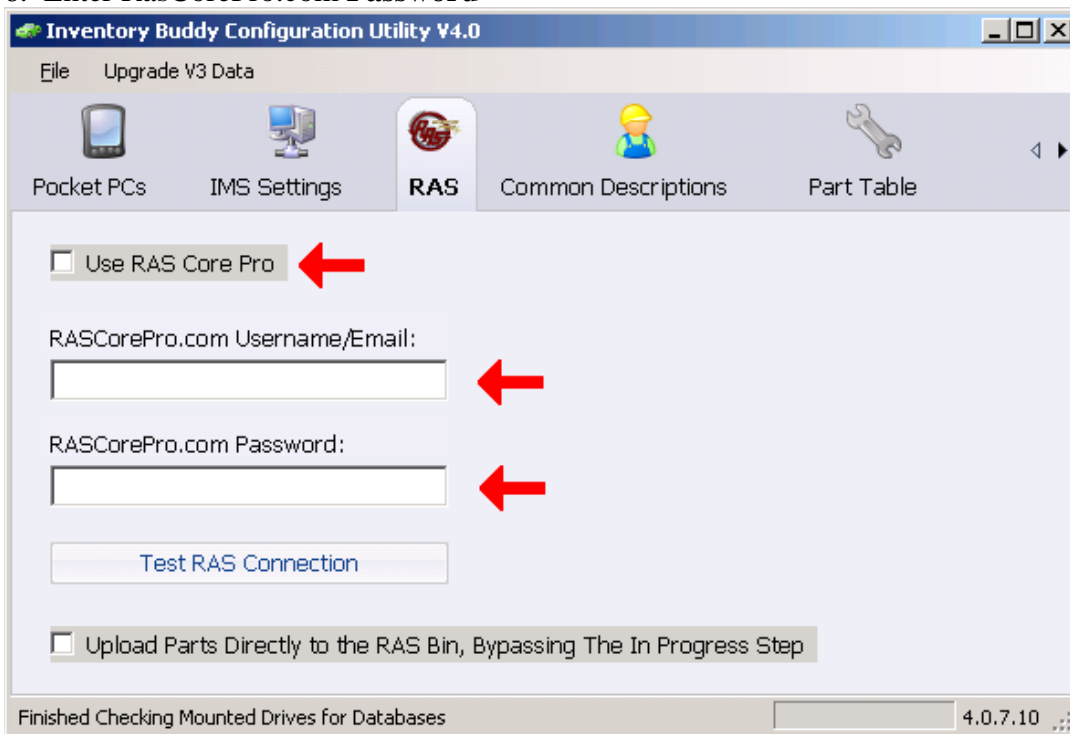
3. Click **RAS** tab in Inventory Buddy Configuration Utility



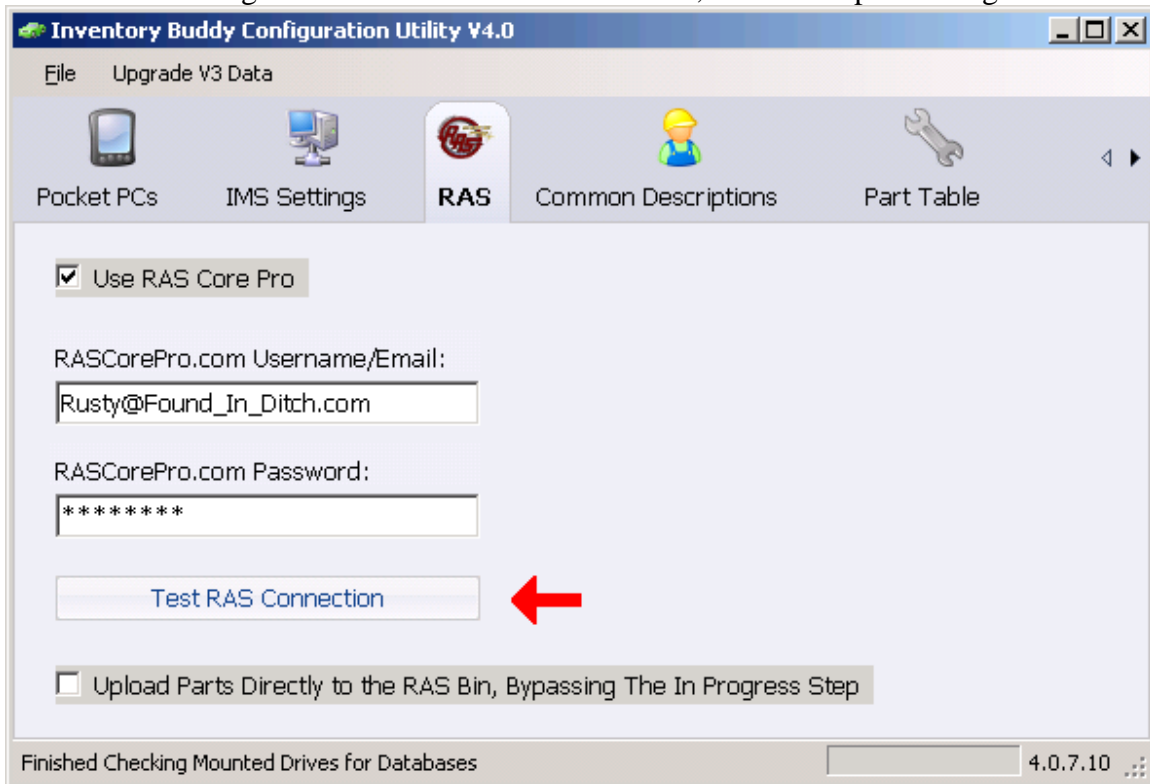
4. Click to checkmark the box labeled **Use RAS Core Pro**

5. Enter RasCorePro.com **Username/Email**

6. Enter RasCorePro.com **Password**



7. Click the **Test RAS Connection** button
 - a. If message confirms valid account found, this step complete
 - b. If message indicates no valid account found, recheck steps 5 through 7



8. If you prefer that parts go directly to your RAS Bin (bypassing "In Progress"), you can check the box labeled "Upload Parts Directly to RAS Bin, Bypassing the In Progress Step".

Working with a Vehicle

When a vehicle is sent to the handheld, the Buddy program also checks with RASCorePro to see what parts they are interested in, and what prices they will pay. These parts have indicators as described in the following paragraphs.

1. On the handheld, when at the Yes/No screen, if RASCorePro has interest in the part, a dollar range is displayed above the Yes button. A range, as opposed to a specific price, is displayed because the price may be different for each interchange, or even within a specific interchange the price may be different depending on OE number or configuration.

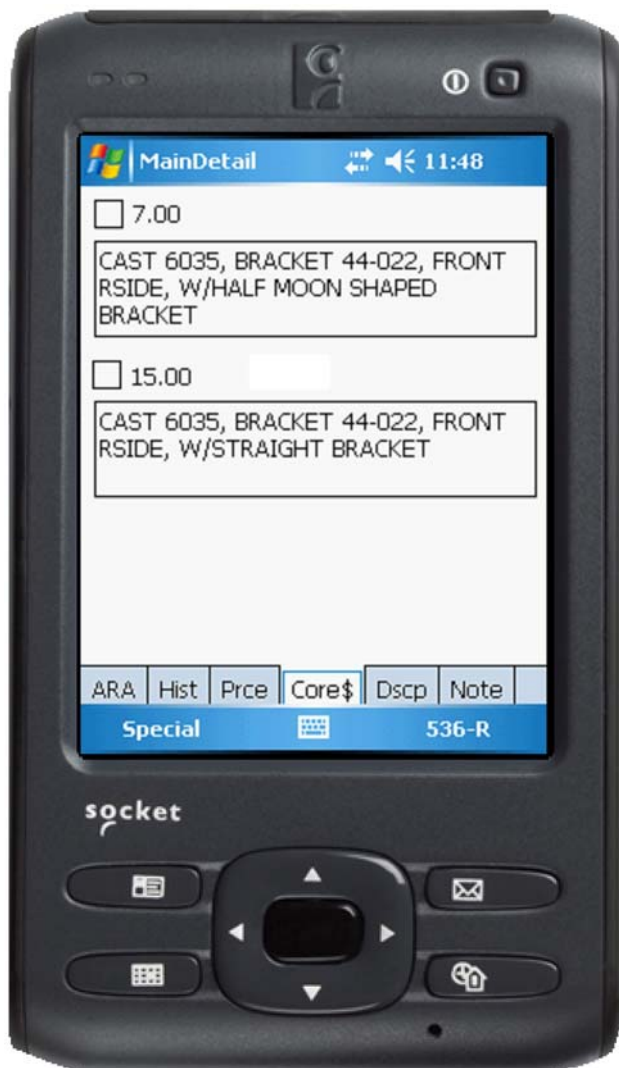


2. Once you have selected the proper interchange for a part, and RASCorePro has interest in that interchange, the center tab on the Buddy screen displays the word "CORE". If the price RASCorePro is willing to pay is above the minimum amount set in your Buddy Defaults, a dollar sign is also displayed on the center tab; "CORE \$". The factory default is five dollars. Buddy support can help you change this default value if you wish.



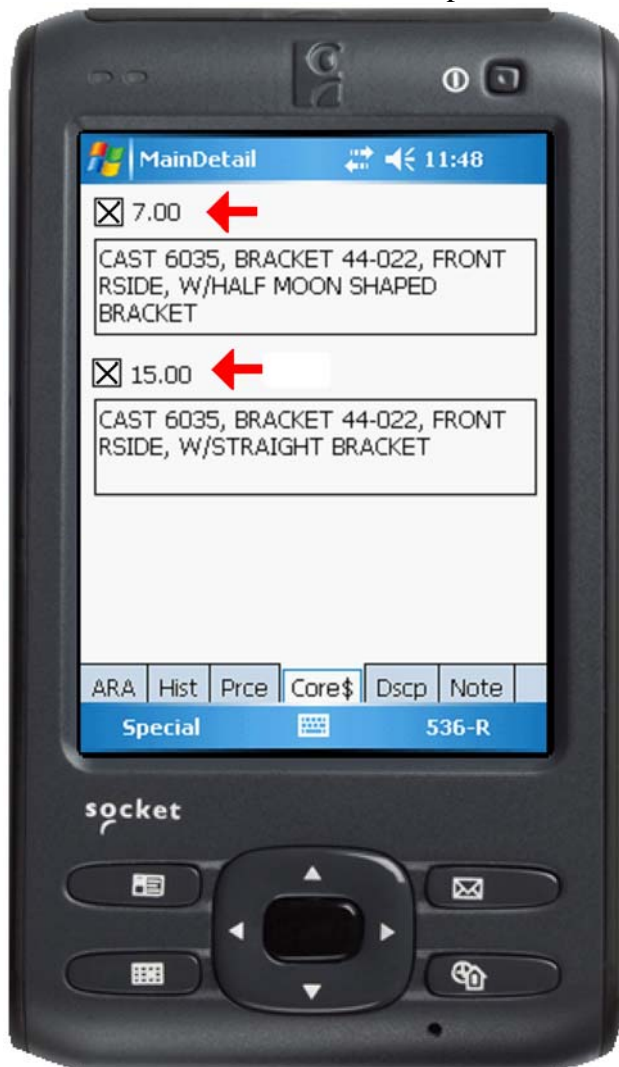
3. If you want to inventory a part to your RASCorePro account, as opposed to your sellable inventory, click on the CORE or CORE \$ tab.
4. Within the Core tab, a checkbox is displayed with the price RASCorePro will pay. If multiple checkboxes are displayed, it means that within that interchange, there are multiple configurations and RASCorePro will pay a different price depending on the configuration.

Along with the different prices, RASCorePro supplies a description to help you figure out which configuration is on your vehicle. In some cases this may be an OEM number to look for. In other cases it may be a physical description.



5. If you are able to determine which configuration is on your vehicle or, of course, if there is only one checkbox offered, click the checkbox to mark it for selling to RASCorePro.

If there are multiple configurations available and you are unable to determine which is on your vehicle, go ahead and click ALL configuration checkboxes that might apply. You will have another chance after it's pulled to indicate the specific configuration.



6. After you have checked the box(s) on the Core tab, click on the DESC tab. The SAVE button now displays "SAVE AS RAS CORE". To save this part to your RASCorePro account, click that button.



The screen closes and you are taken to the Yes/No screen for the next part from your Worksheet or Dismantler report.

7. When you send the inventoried vehicle back into your Inventory Management System, the Buddy program sends any parts you marked for RASCorePro, to your RASCorePro Account on line. By default, the parts land in the "In Progress" section.

As parts are physically pulled and placed into your physical RAS Bin, you can go to your RASCorePro account online and move them into your RAS BIN within your account as well. At that time, if you had made multiple checkmarks on a single part (due to multiple configurations), you may wish to delete the configurations that do not apply to the physical part you pulled.



If you prefer that parts go directly to your RAS Bin (bypassing "In Progress"), you can check the box within Buddy Configuration Utility-->RAS tab, labeled "Upload Parts Directly to RAS Bin, Bypassing the In Progress Step."

After this point there is no longer any interaction between the Buddy and RASCorePro.